



Targa®

The Arctic Ocean
The Arctic Ocean

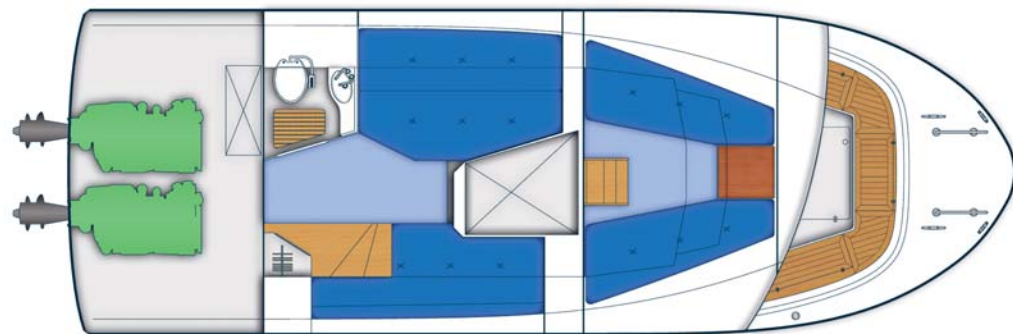
The 4 x 4 of the sea **Targa 33**

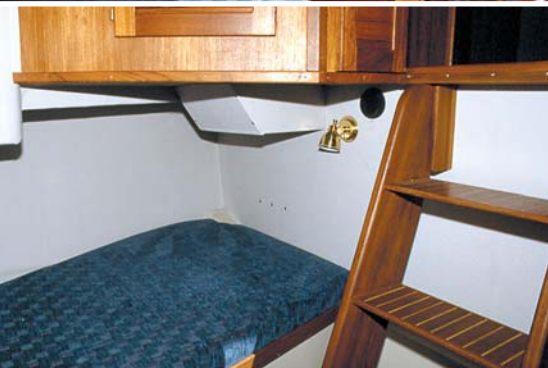


Targa 33

The severe beauty of the Arctic Ocean spread out before Adolf Erik Nordenskjöld in 1878. He made the voyage in Vega, one of the best boats of its time. Nordenskjöld's voyage was one of exploration and self-discovery that took him beyond the horizon.

Now it is Targa's turn to take you on your own voyage of discovery.





Targa 33

L.o.a.	10,70 m	35,2 ft
Length (hull)	10,05 m	33,1 ft
Beam	3,50 m	11,5 ft
Draught	0,90 m	3 ft
Weight	approx. 7200 kg	
Fuel tank	980 L	
Engine (2 engines)	382-514 kW	520-700 HP
Speed	31-39 K.T.	
Cruising speed (2x260 HP)	approx. 30 K.T.	
Fuel consumption (2x260 HP)	approx. 2,8 L/N.M.	

Options are shown on the pictures

Targa 33

Excellent handling and considerable amount of space make the Targa 33 an excellent choice for the whole family. Powerful engines give you a feeling of sportiness, even though it is a high specification family boat. High quality trim and variety of practical features ensure your trip is enjoyable and make this boat suitable for even very long trips

- Fore and aft self draining decks
- Swimming platform including ladder
- Wide passageways around pilothouse
- Flybridge steering position
- 10 + 3 seats on deck
- Pilothouse with two sliding doors
- U-shaped front seat with storage lockers
- Seat in front of pilothouse
- Seven seats in pilothouse
- Table for six in pilothouse
- Galley (2-burner cooker + fresh water)
- 1 double + 1 pipe berth in aft cabin
- 2 berths in fore cabin
- Toilet including shower in aft cabin

OPTIONAL EQUIPMENT

The following is just some of the equipment available as optional extras:

- Coloured hull / special colours
- Teak deck / seats
- Mast with boom including winch
- Foldaway teak table for fore/aft deck
- Storage box/seat; foldable seats on aft deck
- Pantry equipment: fridge, icebox, micro-oven etc
- Bow and stern thrusters
- Aft/fore deck anchoring systems
- 220 V chargers/inverters
- Heating/air conditioning system
- Navigation equipment



Targa 33

030570

Targa 33



P.O.Box 9
FIN-66101 Malax, Finland
Tel +358 (0)207 641 400
Fax +358 (0)6 365 1551
www.targa.fi