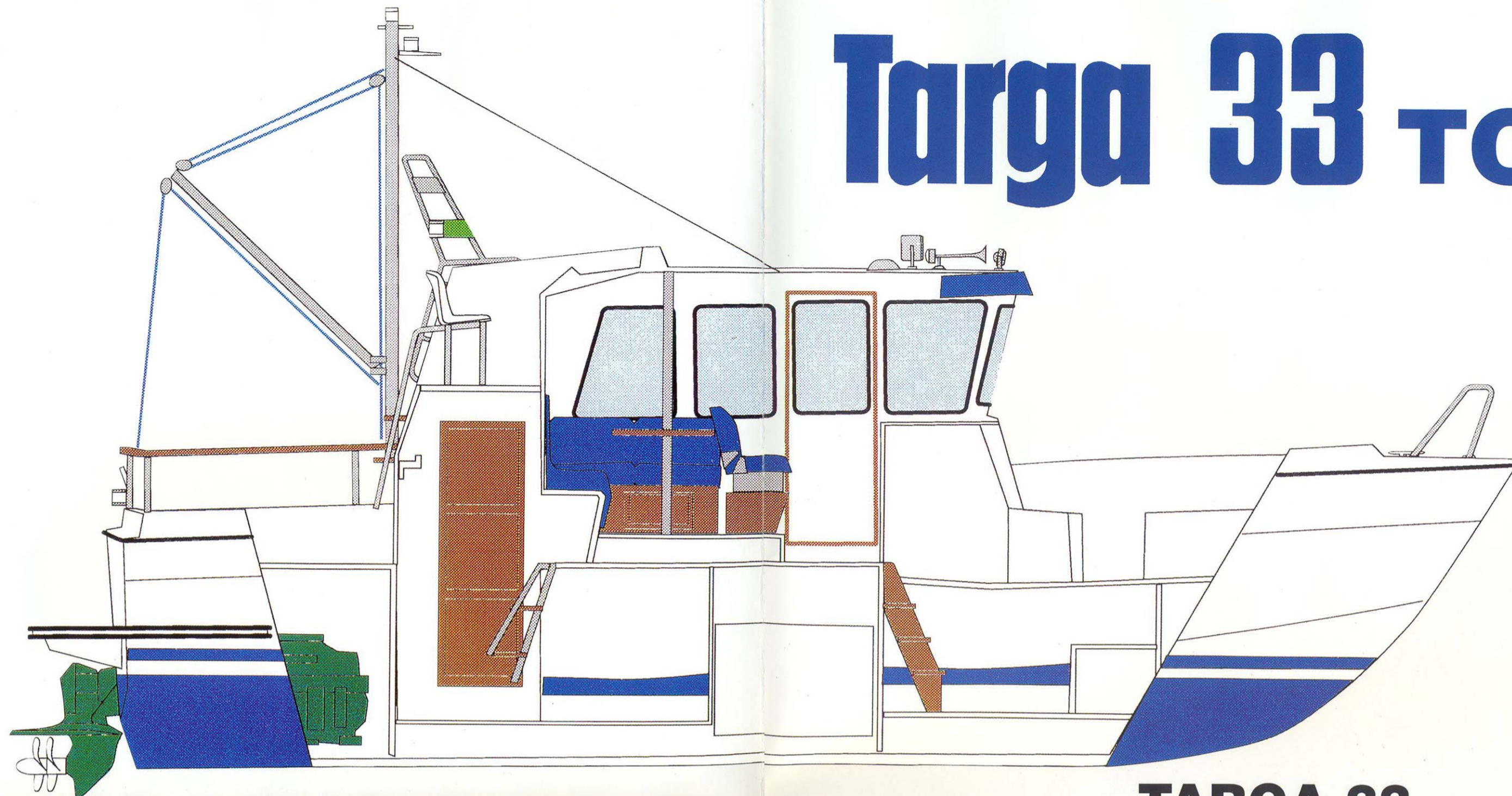


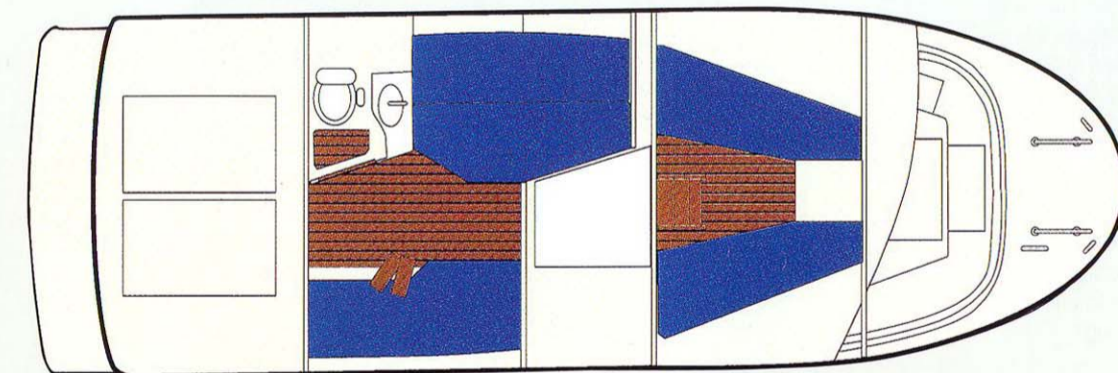
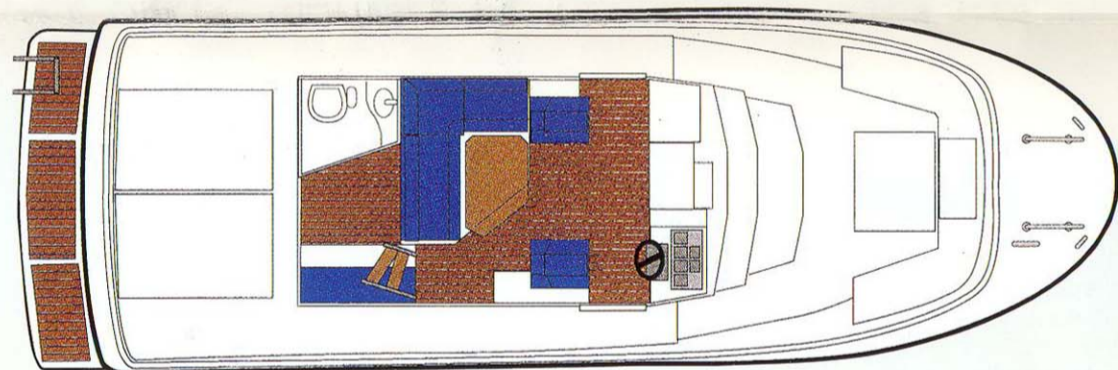
# Targa 33



# Targa 33 TC



## TARGA 33 TC

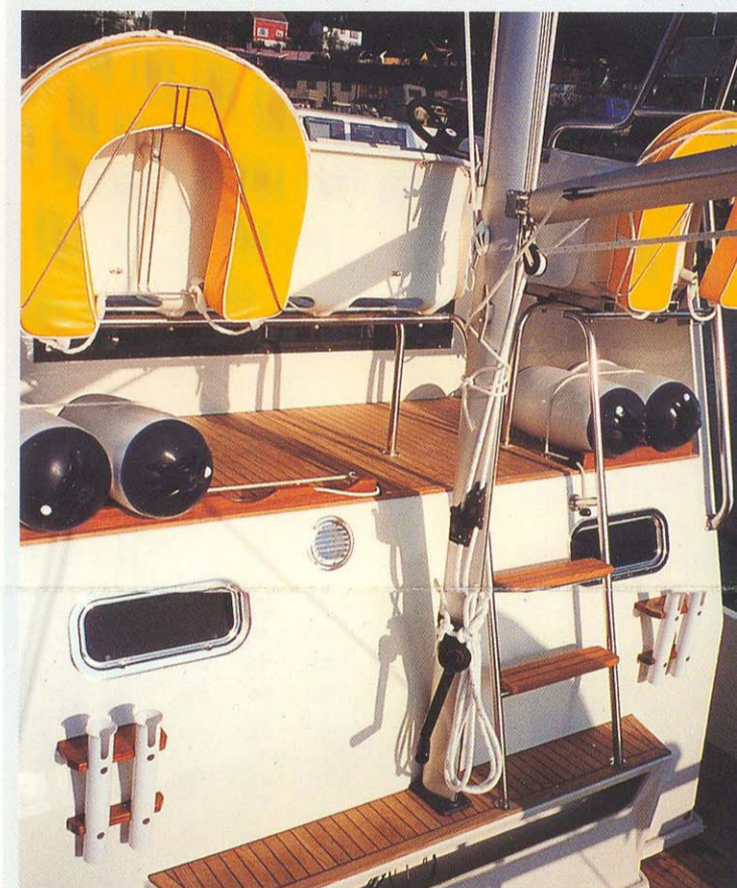
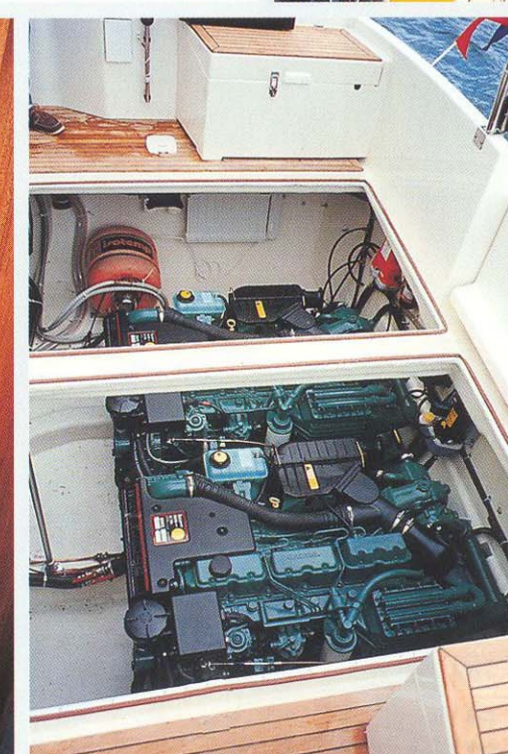


- Fore and aft selfbailing decks X
- Swimming platform incl ladder X
- Wide passageways around pilothouse X
- Flybridge steering position, 3 seats X
- Pilothouse with two sliding doors X
- Mast with crane incl winch E
- Seats outside 11+2
- Foredeck foldaway table, 6 persons E
- Seat/storage boxes on foredeck X
- Seat/storage boxes on aftdeck E
- Seats in pilothouse 7
- Berths: - double berth aft cabin 1
- Berths: - pipeberth aft cabin 1
- Berths: - berths fore cabin 2
- Dinette for 6 persons in pilothouse X
- Pantry X
- Toilet with shower X
- Fridge E

X = standard. E = extra equipment

L.o.a	10.70 m	(35'1")
Length (hull)	10.05 m	(33')
Beam	3.50 m	(11'6")
Draught	0.90 m	(3')
Weight	appr 5600 kg	(12.300 lb)
Fuel tank capacity	900 l	(198 gal)
Engine	twin turbo diesel	(400-500 hp)
Top speed	34-38 kn	
Cruising speed	appr 29 kn	
(460 hp)		
Fuel consumption	appr 1.8 l/n.mile/28 kn	
(460 hp)		

Extra equipment is shown on the pictures





Manufacturer  
**BOTNIA MARIN**

P.O.Box 9, FIN-66101 MALAX, FINLAND  
Tel. (Int.) +358-6-365 1555, FAX (Int.) +358-6- 1551