



Targa 25

Targa 25





Targa 25 – a boat with many exciting possibilities

With the Targa 25 there is a host of possibilities. Now, we're not saying this just because she is capable of some 35 knots maximum speed and cruises comfortably at 30 knots. What we are thinking of is how easy it is to step aboard, and all that space around the wheelhouse. We think of the big, uncluttered decks fore and aft. No messing with spray hoods or cockpit covers. And there's a fly-bridge for those beautiful days and for easy manoeuvring at close quarters.

The Targa 25 is an easily maintained, problem-free, tough and sensible boat. A great boat for those who love the sea and have made it their way of life.

For instance...

The Island Dweller

He needs a boat for all seasons that is sturdy and fast, a boat that can handle any kind of transport in all weathers and which requires only upkeep. The Targa 25 is the obvious choice.

The Fisherman

Sports Fishermen and Professionals alike appreciate the wide, uncluttered decks, the great load capacity, the speed, the economy and the comfort of the Targa 25, a safe and versatile platform for all kinds of fishing, all year round.

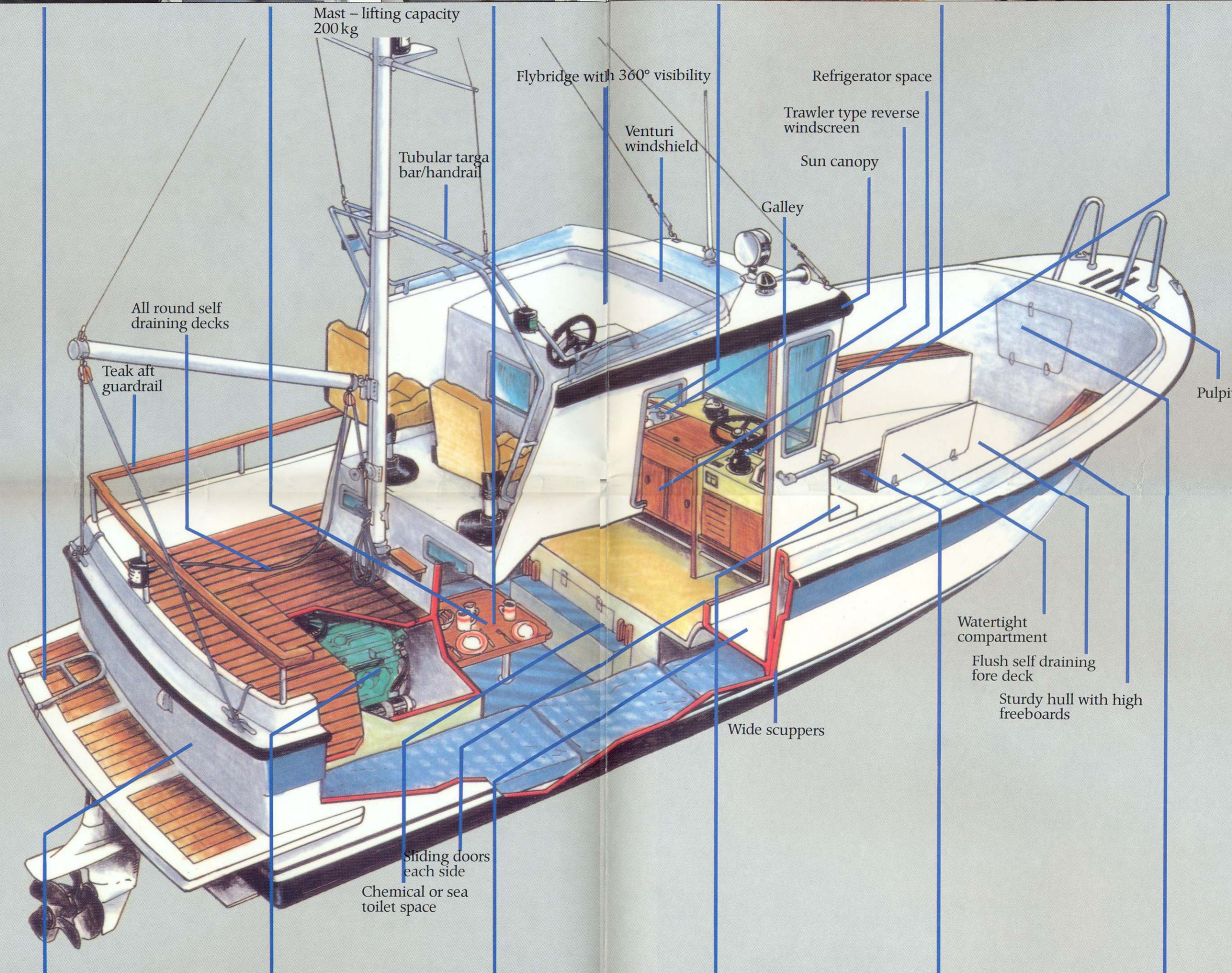
The Holiday Maker

The sporting family who wants to get away from it all will quickly reach unspoilt beaches and islands off the beaten track if they choose the Targa 25.

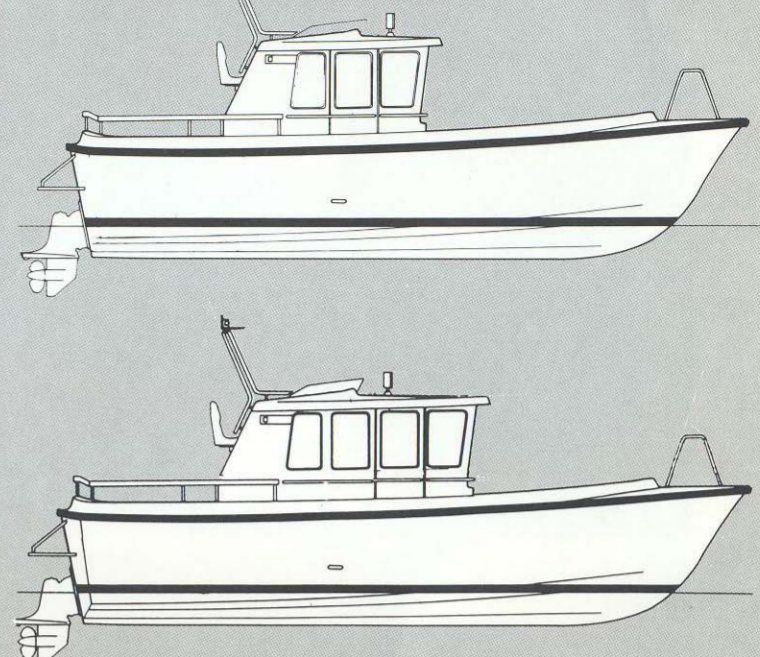
The model with 3 seats in the wheelhouse is called the Targa 25 Cabin, and the extended wheelhouse model – the Targa Long Size Cabin – has 6 seats. Both models have two full-length and two nearly full-length, comfortable berths. An optional feature is the two-burner cooker with sink in the wheelhouse.

The Professionals

Divers, journalists, photographers, scientists, fishing wardens, sea taxi drivers, lighthouse keepers, main-



tenance men... All whose profession involves the sea will appreciate what the Targa 25 can do for them in their work. Seven people can be seated in the cabin and at least ten on deck.



The Sailing crowd

Surprised? The Targa 25 is the perfect tender or committee boat at yacht races. She's excellent for towing, and thanks to her stability she is ideal for crew changes at sea.

The boat can be built to be unsinkable.

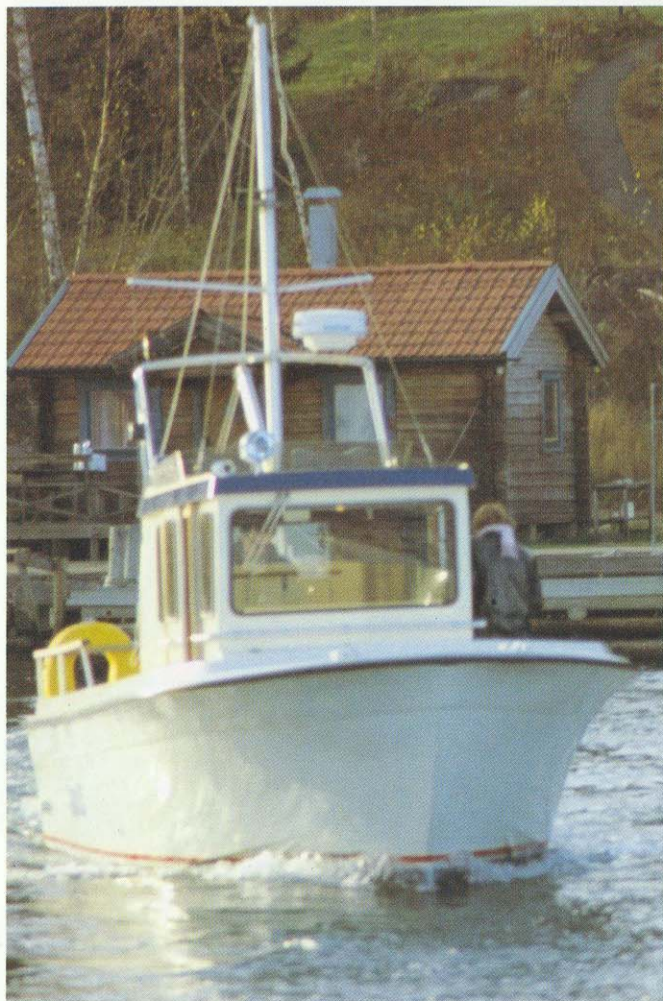
As an option sufficient buoyancy can be built into the Targa 25 to make the boat virtually unsinkable.

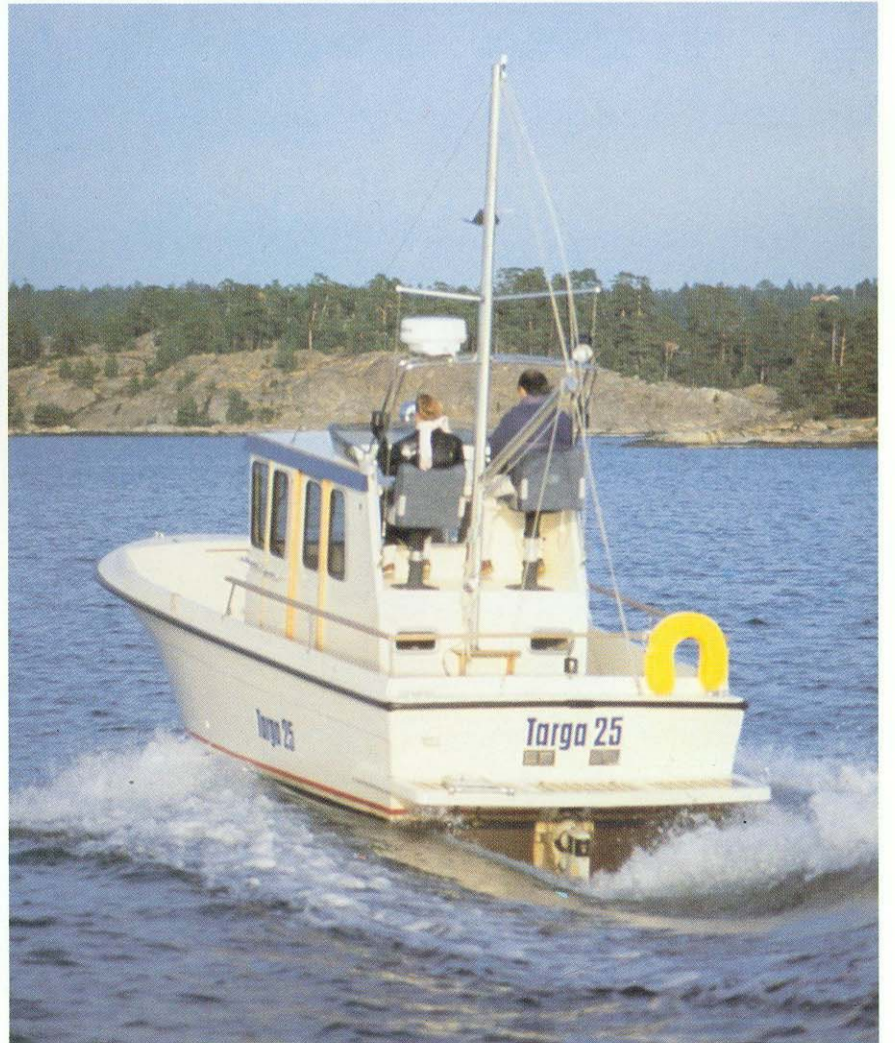
You will see from the information and photographs that the Targa is an exciting new concept for the Sports/Fisherman which is why she is known as "The Range Rover of the Sea".

- L.O.A. 24' 7" (7.50 m)
- Beam: 9' 4" (2.85 m)
- Draught: 2' 7" (0.80 m) including sterndrive unit
- Displacement: about 2.9 t
- Long Size Cabin 3.0 t
- Diesel engine: 130-200 hp (sterndrive) speed 23-32 knots
- Petrol engine: 146-300 hp (sterndrive) speed 23-37 knots
- Fuel tank capacity: 300-500 litres (65-110 gal)
- Range: up to 450 nautical miles
- Berths: 2 (+2)



Specifications may be changed without notice
Standard equipment and options as listed in the Price List.







BOTNIA MARIN

P.O. Box 9 SF-66101 MAALAHTI, FINLAND
Tel. (International prefix) +358-61-651 555

Targa 25